

Photometric Report

MAC Aura Raven XIP – Medium

MARTIN PROFESSIONAL R&D OPTICAL LABORATORY

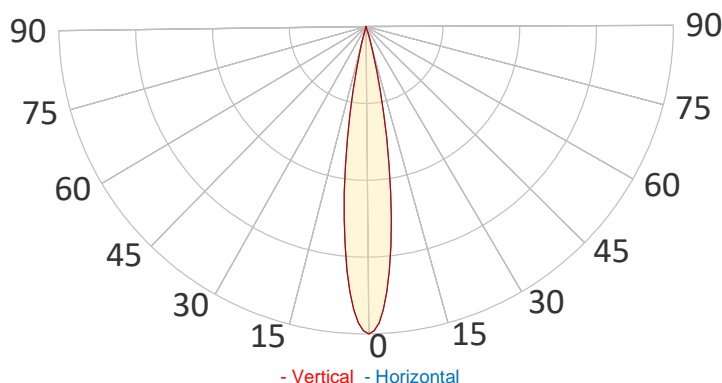
GENERAL SPECIFICATIONS

Total Fixture Output:	27000 lm
Light Engine Output:	39000 lm
Efficacy:	26.5 lm/W
Lens Option:	None
Beam Angle (50%):	6,6 - 35,3°
Field Angle (10%):	9,9 - 51,0°
Cut-off Angle (3%):	11,2 - 58,4°
CRI:	82 (+/- 3)
CQS:	89 (+/- 3)
TM-30 Rf:	84 (+/- 3)
TM-30 Rg:	110 (+/- 3)
TLCI:	84 (+/- 3)
Color Temperature:	6500 K



SAMPLE MEASUREMENT

POLAR PLOT

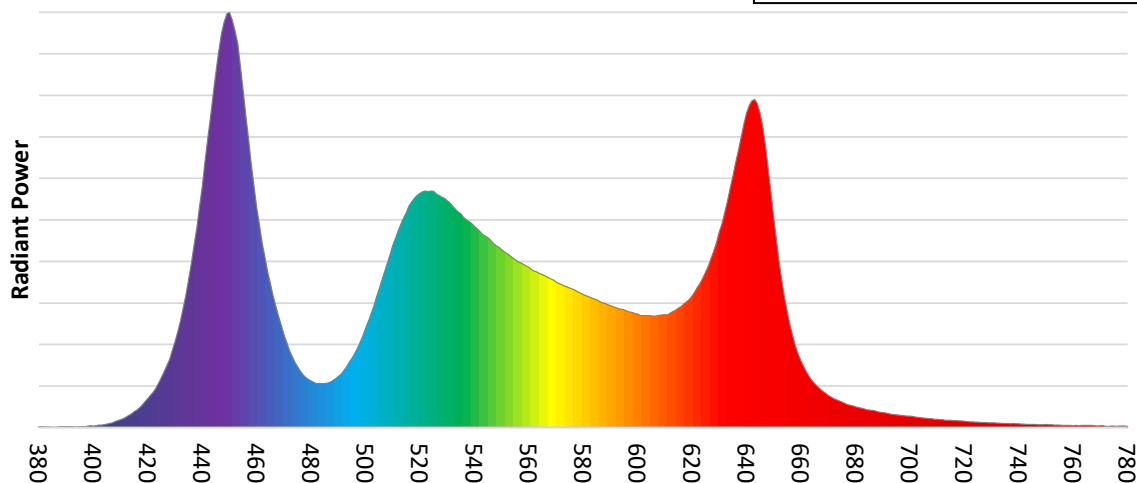


Catalog Number:	MAR-90250405HU
Measured Output:	26519 lm
Measured Peak:	308205 cd
Consumed Power:	1020 W
Efficacy:	26.0 lm/W

Beam Angle (50%):	17°
Field Angle (10%):	28°
Cut-off Angle (3%):	33°

Measurement Condition:	
Ambient Temperature:	25° +/- 5° C
AC Supply:	230V/50Hz
Fan Mode:	Regulated Fan
Fixture Warm-up Time:	30 minutes

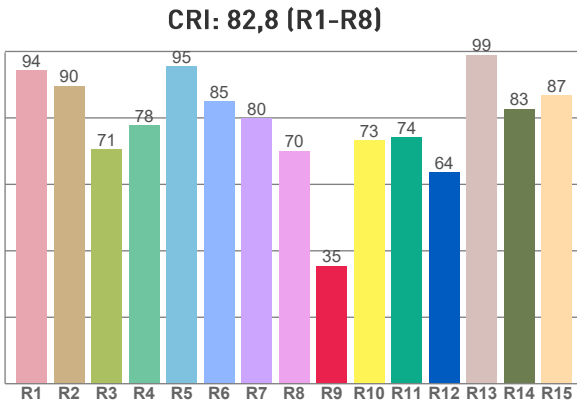
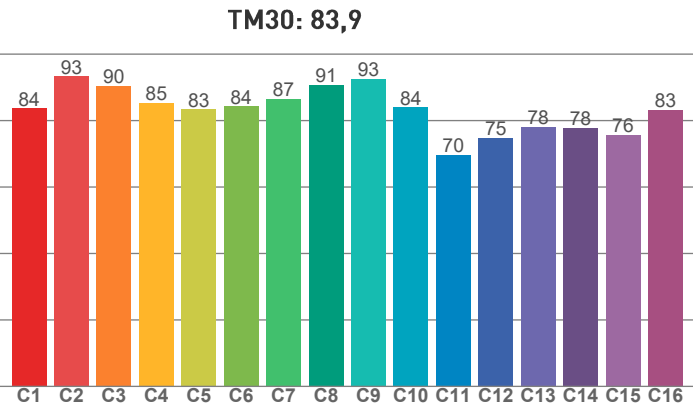
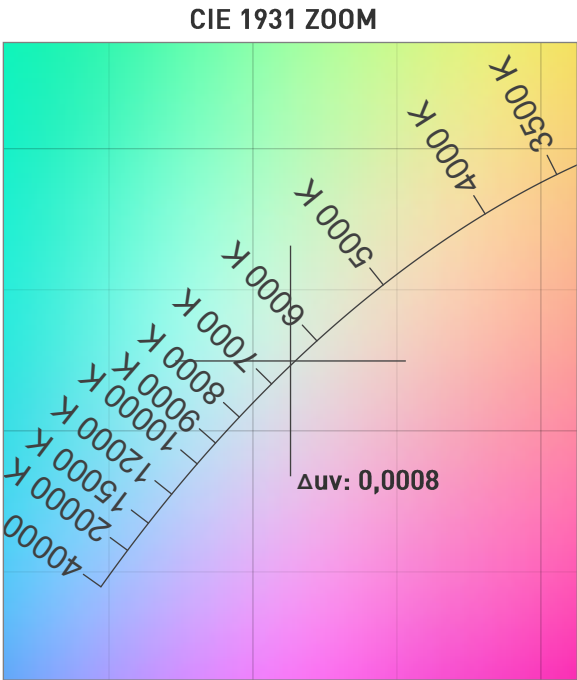
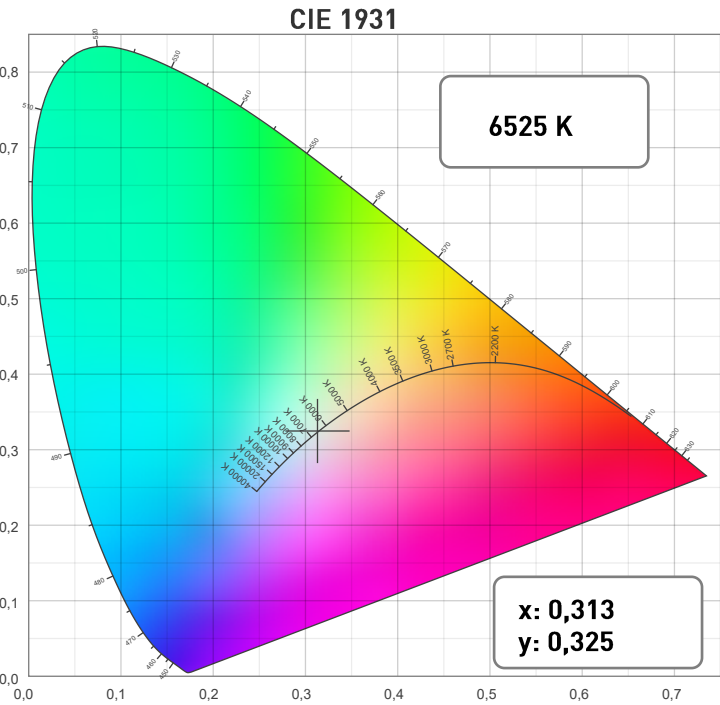
SPECTRAL DISTRIBUTION



Photometric Report

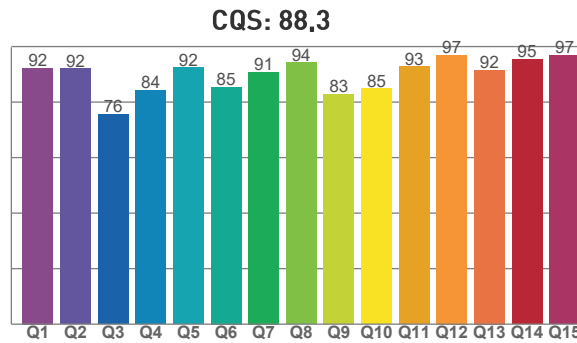
MAC Aura Raven XIP – Medium

CHROMATICITY



COLOR PARAMETERS

Color Temperature	Color Rendering Index	Red Component	Color Fidelity	Color Gamut
CCT	CRI	CRI R9	TM30 Rf	TM30 Rg
6525 K	82,8	35,5	83,9	109,8



Television Lighting Consistency Index	Color Quality Scale	Color Coordinate CIE 1931	Color Coordinate CIE 1931	Color Coordinate CIE 1964	Color Coordinate CIE 1964	Color Deviation from Black Body
TLCI	CQS	x	y	u	v	Δuv
84 (+/- 3)	88,3	0,313	0,325	0,200	0,311	0,0008

Photometric Report

MAC Aura Raven XIP – Medium

TM30

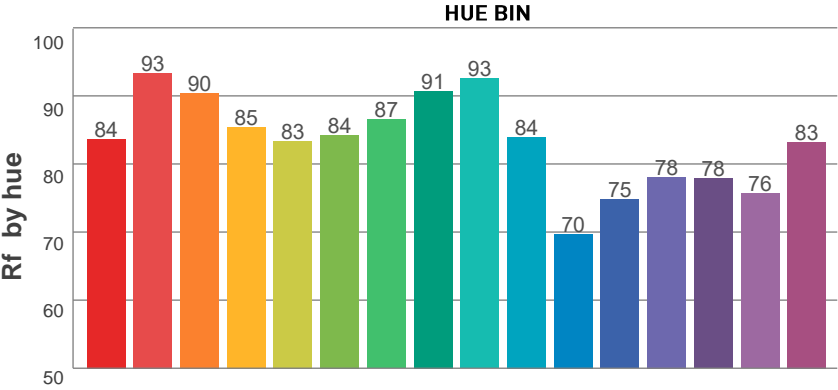
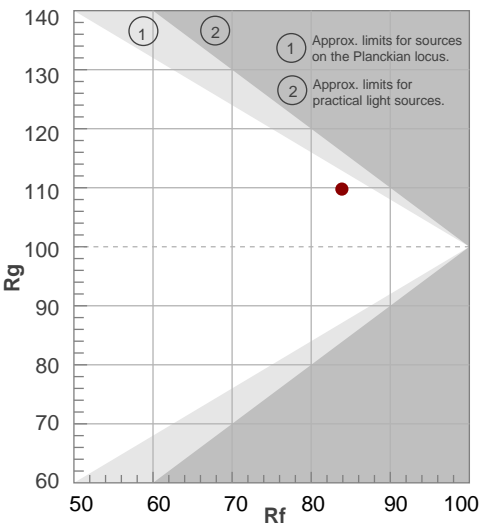
Rf 83,9

Fidelity index Rf

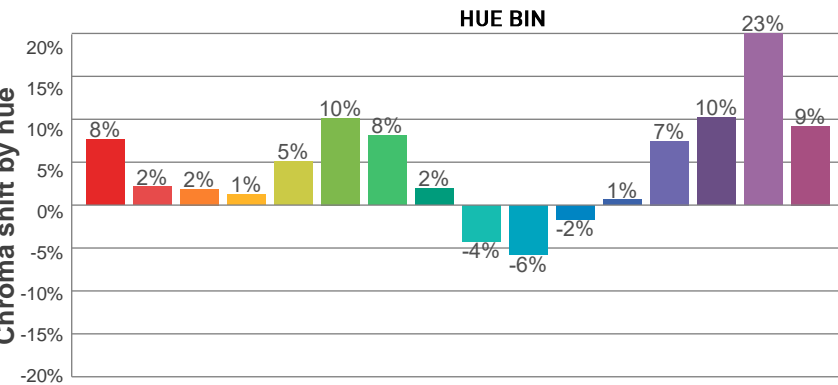
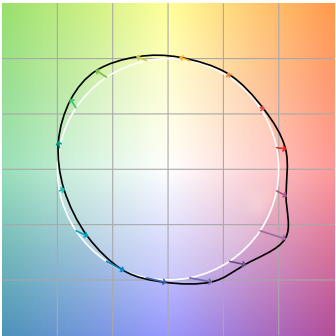
Rg 109,8

Gamut index Rg

Hue Bin	R _f	Graphic shifts (%)	
		Chroma	Hue
1	84	8%	-3%
2	93	2%	-3%
3	90	2%	3%
4	85	1%	9%
5	83	5%	7%
6	84	10%	4%
7	87	8%	-3%
8	91	2%	-5%
9	93	-4%	-1%
10	84	-6%	9%
11	70	-2%	17%
12	75	1%	18%
13	78	7%	18%
14	78	10%	10%
15	76	23%	7%
16	83	9%	-3%



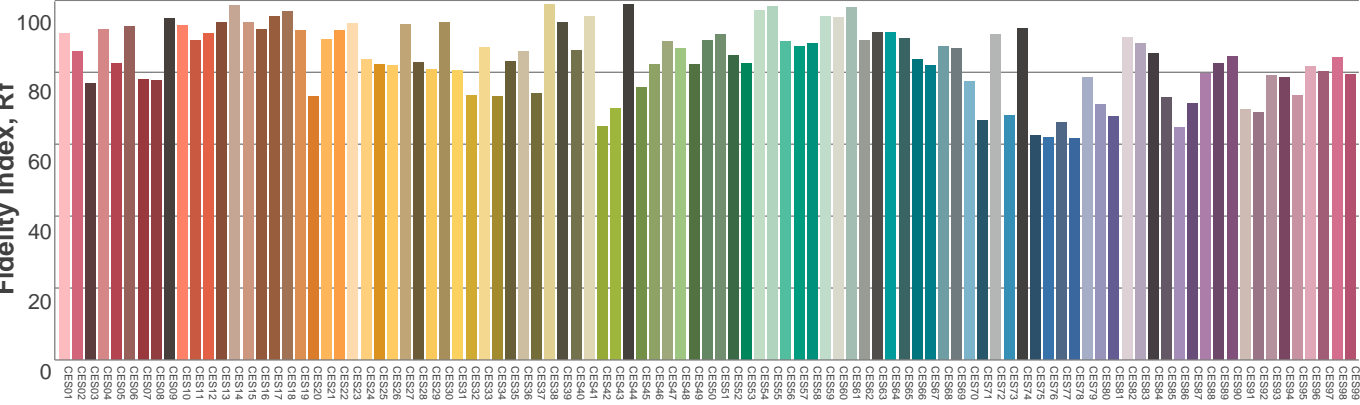
COLOR VECTOR GRAPHICS



COLOR DISTORTION GRAPHICS



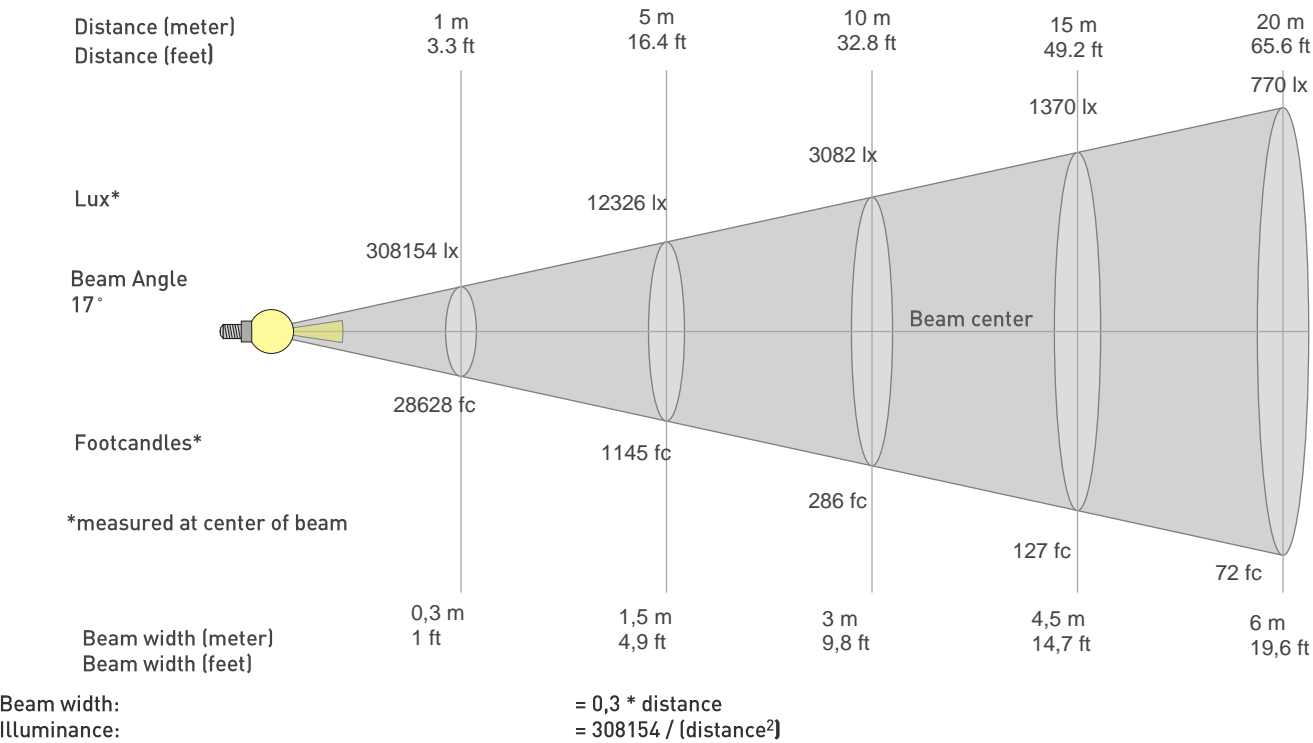
COLOR EVALUATION SAMPLE



Photometric Report

MAC Aura Raven XIP – Medium

BEAM DETAILS



distance in [m] for illuminance in [lux] distance in [ft] for illuminance in [fc]

BEAM ILLUMINANCE FROM 1-20M

1m	2m	3m	4m	5m	6m	7m	8m	9m	10m	11m	12m	13m	14m	15m	16m	17m	18m	19m	20m
3,3ft	6,6ft	9,8ft	13,1ft	16,4ft	19,7ft	23ft	26,2ft	29,5ft	32,8ft	36,1ft	39,4ft	42,7ft	45,9ft	49,2ft	52,5ft	55,8ft	59,1ft	62,3ft	65,6ft
308154lx	77039lx	34239lx	19260lx	12326lx	8560lx	6289lx	4815lx	3804lx	3082lx	2547lx	2140lx	1823lx	1572lx	1370lx	1204lx	1066lx	951lx	854lx	770lx
28628,5fc	7157,1fc	3180,9fc	1789,3fc	1145,1fc	795,2fc	584,3fc	447,3fc	353,4fc	286,3fc	236,6fc	198,8fc	169,4fc	146,1fc	127,2fc	111,8fc	99,1fc	88,4fc	79,3fc	71,6fc

